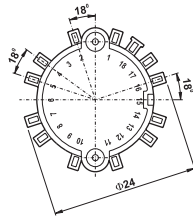
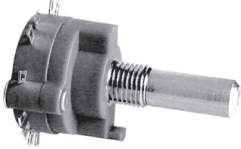


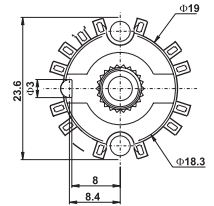
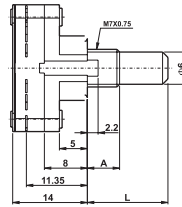
Model

Specifications

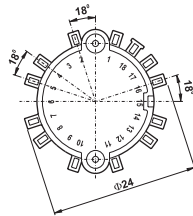
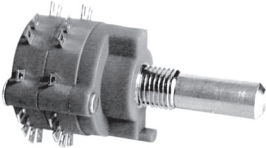
SR1901G0



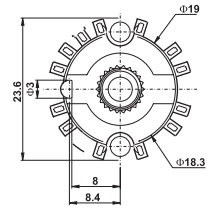
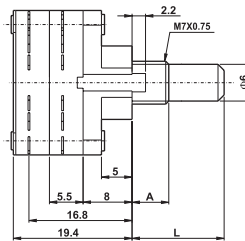
CHANGEOVER ANGLE=30°
Timing:Non-Shorting(break before make)



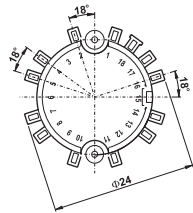
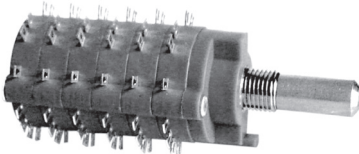
SR1902G0



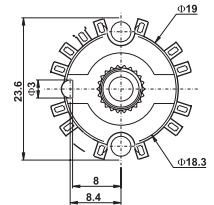
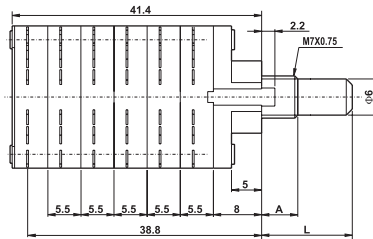
CHANGEOVER ANGLE=30°
Timing:Non-Shorting(break before make)



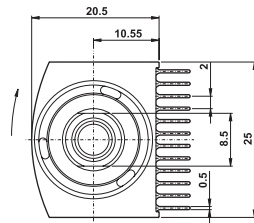
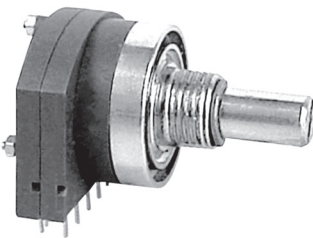
SR1906G0



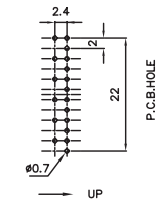
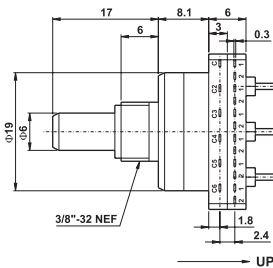
CHANGEOVER ANGLE=30°
Timing:Non-Shorting(break before make)



SR1912H0



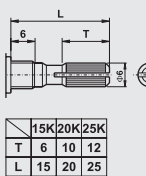
Timing: ① Shorting(make before break)
② Non-Shorting(break before make)



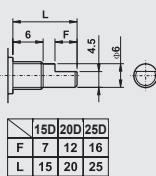
Switch

TYPE OF SHAFT

K-TYPE



D-TYPE



RATING
CONTACT RESISTANCE
INSULATION RESISTANCE
WITHSTAND VOLTAGE
TIMING
LIFE TEST
RESISTANCE TO MANUAL
SOLDERING HEAT

SR19 SPECIFICATION

DC 12V 0.15A
20mΩ MAX
DC 500V 100mΩ MIN
500V 1 MINUTE
NON SHORTING
10,000 CYCLES
260±10°C 3 sec

SR1902H0 SPECIFICATION

DC 30V 1A
20mΩ MAX
DC 500V 100mΩ MIN
500V 1 MINUTE
NON SHORTING OR SHORTING
10,000 CYCLES NO LOAD
260±10°C 3 sec

NOTE:All type of shaft "L" dimension, consult customer service for available lengths.