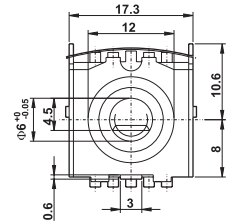
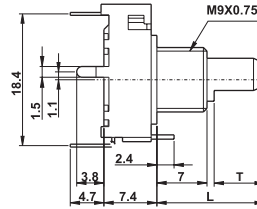
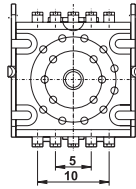
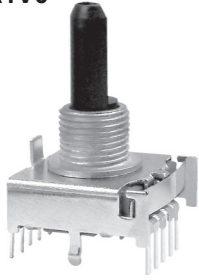


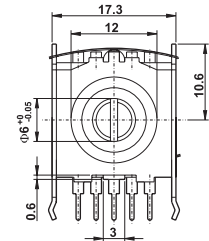
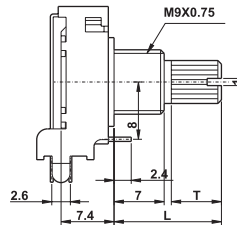
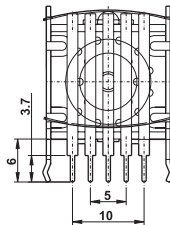
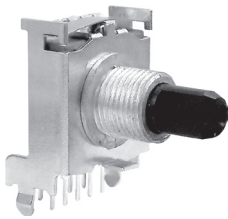
Model **Specifications**

SR17A1V0



Timing:Non-Shorting
CHANGEOVER ANGLE=30°

SR17A1H0



Timing:Non-Shorting
CHANGEOVER ANGLE=30°

ORDER NO.	SW. FUNCTION	ORDER NO.	SW. FUNCTION
SR17A1V0-D12	SP 2 POS	SR17A1H0-D12	SP 2 POS
SR17A1V0-D13	SP 3 POS	SR17A1H0-D13	SP 3 POS
SR17A1V0-D14	SP 4 POS	SR17A1H0-D14	SP 4 POS
SR17A1V0-D15	SP 5 POS	SR17A1H0-D15	SP 5 POS
SR17A1V0-D16	SP 6 POS	SR17A1H0-D16	SP 6 POS
SR17A1V0-D17	SP 7 POS	SR17A1H0-D17	SP 7 POS
SR17A1V0-D18	SP 8 POS	SR17A1H0-D18	SP 8 POS
SR17A1V0-D22	DP 2 POS	SR17A1H0-D22	DP 2 POS
SR17A1V0-D23	DP 3 POS	SR17A1H0-D23	DP 3 POS
SR17A1V0-D24	DP 4 POS	SR17A1H0-D24	DP 4 POS

D-TYPE

Not specified slotting angle

K-TYPE

Not specified slotting angle

A:7m/m(standard)

F	7	12	12
T	7	12	12
L	15	20	25

SPECIFICATION	
Rating	D.C. 16V 0.3A
Contact resistance	50mΩ max.
Rotational torque	200 ± 100gf.cm
Operating life	10,000 cycle

Switch