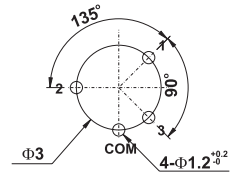
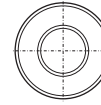
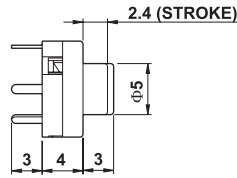
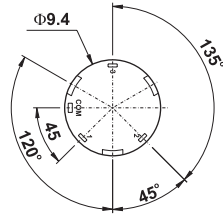
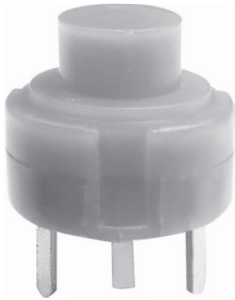


Model **Specifications**

SR9A1V0



P.C.B. MOUNTING DETAIL

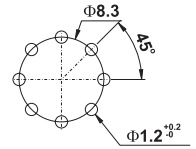
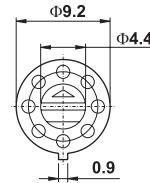
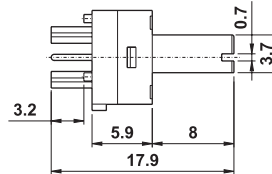
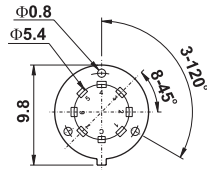
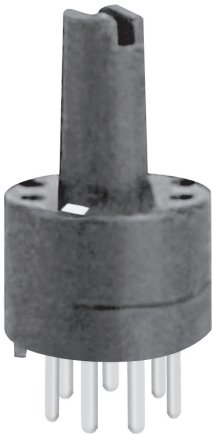
SPECIFICATIONS

RATING:	30V DC 0.1A.
CONTACT RESISTANCE:	100 MΩ MAX.
INSULATON RESISTANCE:	500V DC 50MΩ MIN.
OPERATING TEMPERATURE:	-20°C~70°C
OPERATING LIFE:	2,000 CYCLES

SP09

RATING:	30V DC 0.1A.
CONTACT RESISTANCE:	100 MΩ MAX.
INSULATON RESISTANCE:	500V DC 50MΩ MIN.
OPERATING TEMPERATURE:	-20°C~70°C
OPERATING LIFE:	2,000 CYCLES

SR9B1V0



P.C.B. MOUNTING DETAIL

SPECIFICATIONS

RATING:	24V DC 0.5A.
CONTACT RESISTANCE:	25 MΩ MAX.
INSULATON RESISTANCE:	500V DC 100MΩ MIN.
TORQUE FORCE:	180 gf.cm MIN
OPERATING TEMPERATURE:	-20°C~70°C
OPERATING LIFE:	2,000 CYCLES

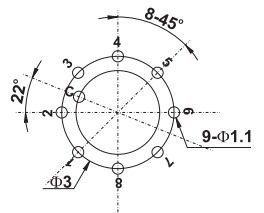
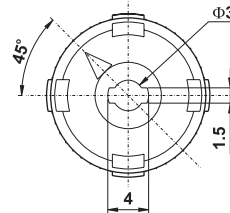
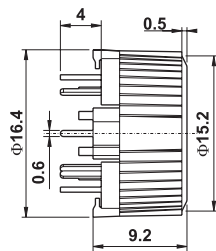
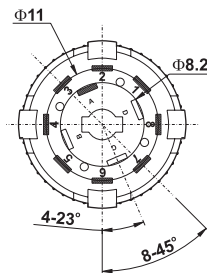
SR09

RATING:	24V DC 0.5A.
CONTACT RESISTANCE:	25 MΩ MAX.
INSULATON RESISTANCE:	500V DC 100MΩ MIN.
TORQUE FORCE:	180 gf.cm MIN
OPERATING TEMPERATURE:	-20°C~70°C
OPERATING LIFE:	2,000 CYCLES

SW.FUNCTION

- SP 2 POS.
- SP 3 POS.
- SP 4 POS.
- SP 5 POS.
- SP 6 POS.
- SP 7 POS.
- SP 8 POS.

SR1501V0



P.C.B. MOUNTING DETAIL

SPECIFICATIONS

RATING:	30V DC 0.5A.
CONTACT RESISTANCE:	25 MΩ MAX.
INSULATON RESISTANCE:	500V DC 100MΩ MIN.
TORQUE FORCE:	300±100GFCM
OPERATING TEMPERATURE:	-20°C~70°C
OPERATING LIFE:	10,000 CYCLES

SR1661

RATING:	30V DC 0.5A.
CONTACT RESISTANCE:	25 MΩ MAX.
INSULATON RESISTANCE:	500V DC 100MΩ MIN.
TORQUE FORCE:	300±100GFCM
OPERATING TEMPERATURE:	-20°C~70°C
OPERATING LIFE:	10,000 CYCLES

SW.FUNCTION

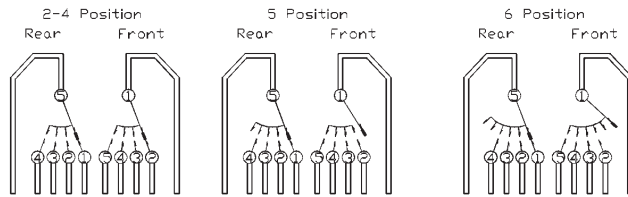
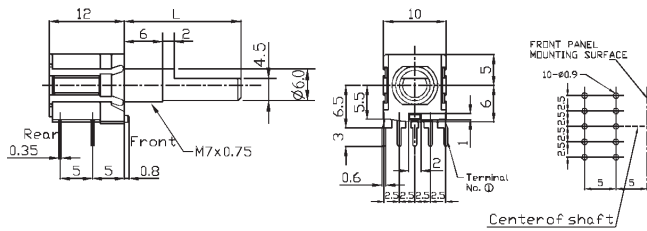
- SP2POS.
- SP3POS.
- SP6POS.
- SP8POS.
- DP2POS.
- DP3POS.
- DP4POS.

Model **Specifications**

Specification

Rating: 16V DC 0.1A
 Contact resistance (initial performance/ after life test): 50Ω Max./150mΩ Max.
 Rotational torque: 400 ± 200gf.cm
 Operating life: Without load - 10,000 cycles
 With load - 10,000 cycles (16V DC 0.1A)

SR1002H0



CHANGEOVER ANGLE: 30°±3°

CHANGEOVER ANGLE: 30°±3°

- 2 SW. FUNCTION
- 3 SP 2 POS.
- 4 SP 3 POS.
- 5 SP 4 POS.
- 6 SP 5 POS.
- 7 SP 6 POS.

- DP 2 POS.
- DP 3 POS.
- DP 4 POS.
- DP 5 POS.

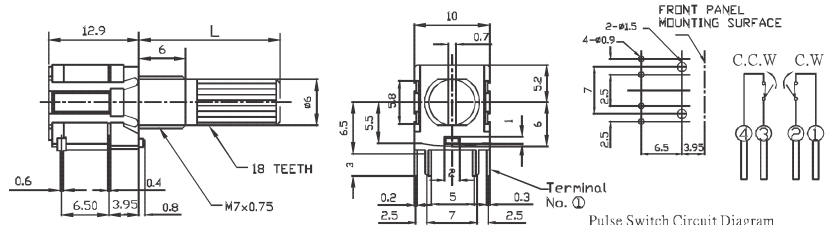
L=15,20,25,30

Switch

Specification

Rating: 16V DC 0.1A
 Contact resistance (initial performance/ after life test): 50mΩ Max./150mΩ Max.
 Degree of rotation: 360° endless
 Rotational torque: 15 ± 7mN.m (300 ± 150gf.cm)
 No. of clicks per 360°: 20
 Operating life: Without load - 30,000 cycles
 With load - 10,000 cycles (16V DC 0.1A)

SR1012H0



L:15, 20, 25, 30

Pulse Switch Circuit Diagram
 C.W.: ON during changeover only
 C.C.W.: ON during changeover only