

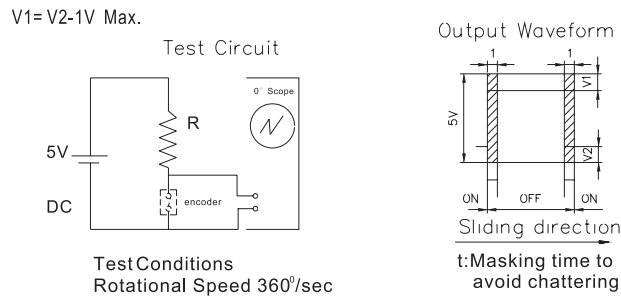
Mechanical Characteristics

Items	E 10 SERIES	E 11 SERIES	E 12 SERIES
Click torque	10~100gf.cm	30~200 gf.cm	30~200gf.cm
Shaft push-pull strength	3Kgf	10Kgf	5Kgf
Rotational Life	50,000Cycles	15,000Cycles	15,000Cycles

Electrical Characteristics

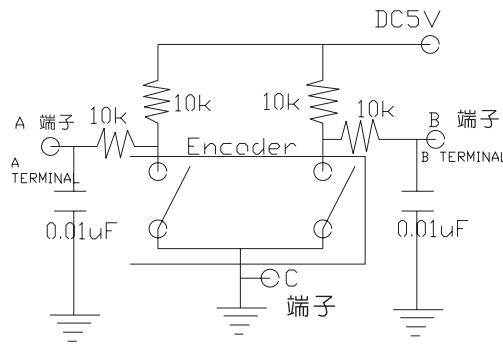
Rating	5V D.C, 1.5mA	5V D.C, 10mA	5V D.C, 0.5mA
Maximum operating Current	1 mA	10mA	0.5mA
Insulation resistance	50V DC,100MΩ Min.	300V DC,100MΩ Min.	50V DC,10MΩ Min.
Voltage Proof	50V A.C	300V A.C	50V A.C

SLIDING NOISE



R=5KΩ Chattering: 2 Sec Max.
Bounce:2m Sec Max.

SUGGEST APPLICATION CIRCUIT



WITH PUSH-ON SWITCH SPECIFICATIONS

Switch Circuit The Number of Contact	Single Pole and Single Throw(Push On)
Travel of Switch	0.5 ^{+0.4} _{-0.3}
Operating Force of Switch	600±300gf (E11)/500±200GF(E12)
Rating Contact Resistance	D.C 16V 3A(Minimum Rating D.C 16V 10mA) First Period:100mΩ, 200mΩ After The End of Useful Life is Reached
Operating Life	25,000 Cycles (E11)/20,000 CYCLES(E12)