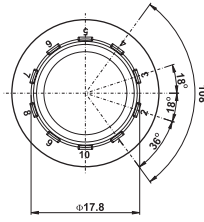
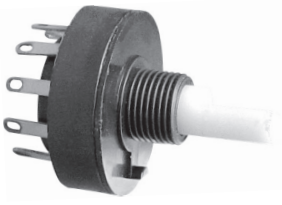
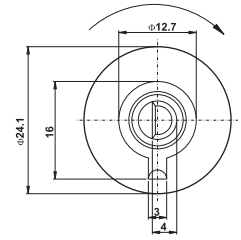
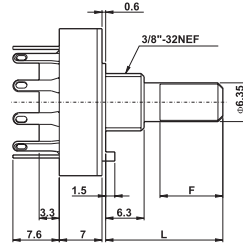


Model **Specifications**

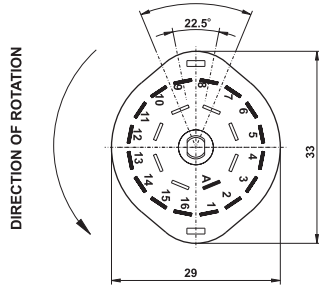
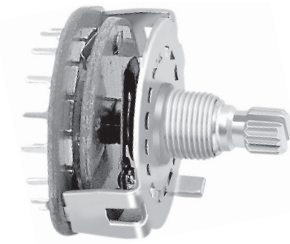
SR24B1G0



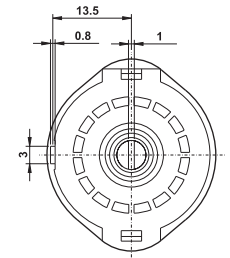
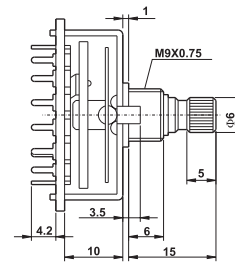
CHANGEOVER ANGLE=36°
Timing: Shorting(make before break)



SR3001V0



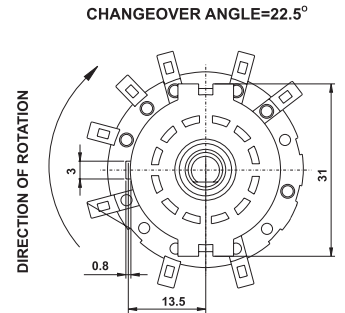
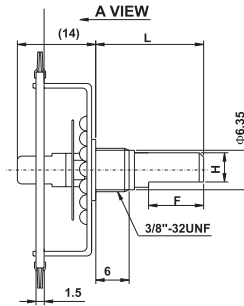
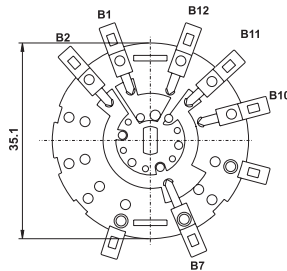
Timing: ① Shorting(make before break)
② Non-Shorting(break before make)



SR3501G0



Timing: ① Shorting(make before break)
② Non-Shorting(break before make)



Switch

SR24B1 SPECIFICATION

Rating: A.C. 125V 5A
A.C. 250V 2.5A
D.C. 125V 0.5A

Contact Resistance: 20mΩ Max

Insulation Resistance: DC 500V 100mΩ Min

Withstand Voltage: 1000V A.C.(50~60Hz,2A)

Rotation Torque: 300 ± 100gf.cm

Operating Life: 10,000 cycles(A.C. 250V 2.5A)
10,000 cycles(A.C. 125V 0.5A)

SR24B1	
F	10.3
L	19.2

SR3001/SR3501 SPECIFICATION

Rating: D.C. 30V 0.3A(SR302)
A.C. 125V 0.3A(SR35)

Contact Resistance: 30mΩ Max

Insulation Resistance: D.C.500V-100mΩ M

Withstand Voltage: A.C.500V-1 Minute

Rotation Torque: 1.5 ± 0.5kg.cm

Mechanical Characteristics

Operation force: 2~4 N-M

Rotation: 30°/step

Life: 2000 cycles Min

SR3501		
H	4	5.3
F	8	10
L	16	20