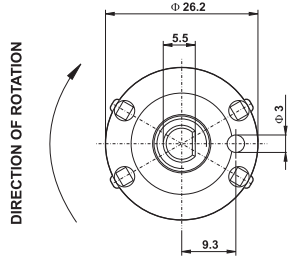
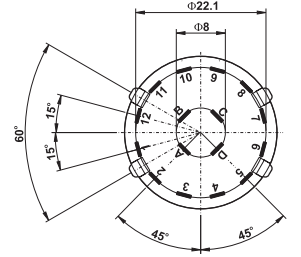
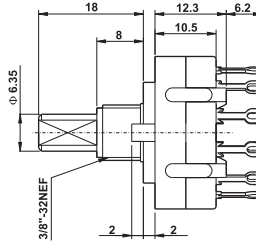


Model **Specifications**

SR26B1G0-8E

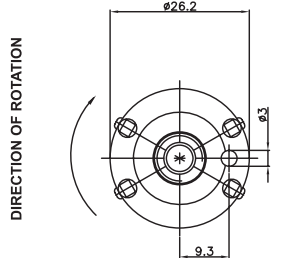
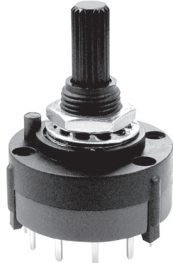


Timing: ① Shorting(make before break)
② Non-Shorting(break before make)

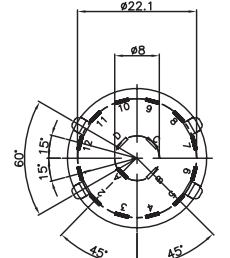
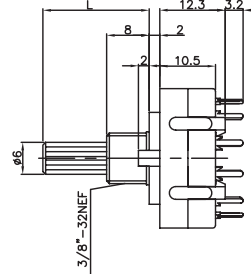


CHANGEOVER ANGLE=30°

SR26B1V0-8E

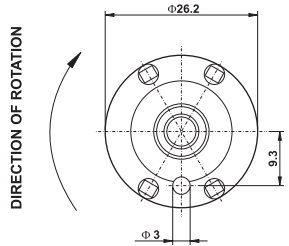


Timing: ① Shorting(make before break)
② Non-Shorting(break before make)

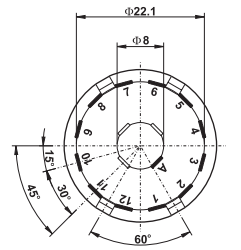
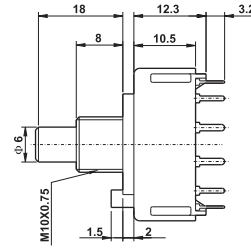


CHANGEOVER ANGLE=30°

SR26B1V0-8F

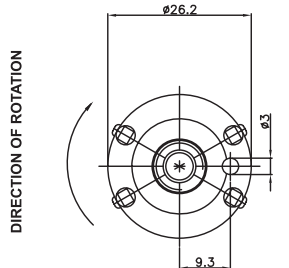
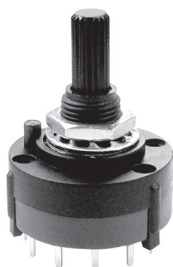


Timing: ① Shorting(make before break)
② Non-Shorting(break before make)

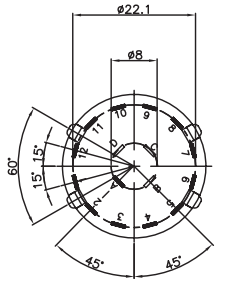
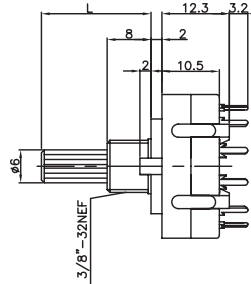


CHANGEOVER ANGLE=30°

SR26B1V0-8E



Timing: ① Shorting(make before break)
② Non-Shorting(break before make)



CHANGEOVER ANGLE=30°

TYPE OF TERMINAL		TYPE OF SHAFT					SPECIFICATIONS																																															
WIRING TYPE	P.C.B TYPE	K-TYPE	D-TYPE	N-TYPE	R-TYPE	G-TYPE																																																
<p>L=15,18,21,29,38</p>							RATING AC 125V 0.3A CONTACT RESISTANCE 30mΩ Max INSULATION RESISTANCE DC 500V-100mΩ Min WITHSTAND VOLTAGE AV500V-1Minute ROTATION TORQUE 1 ± 0.5kg/cm																																															
SW.FUNCTION SP 2 POS. SP 3 POS. SP 4 POS. SP 5 POS. SP 6 POS. SP 7 POS. SP 8 POS. SP 9 POS. SP 10 POS. SP 11 POS.	SW.FUNCTION DP 2 POS. DP 3 POS. DP 4 POS. DP 5 POS. DP 6 POS. DP 8 POS. DP 2 POS. DP 3 POS. DP 4 POS. DP 2 POS. DP 4 POS.	A:8m/m(standard) <table border="1"> <tr><td>15</td><td>20</td><td>25</td><td>30</td><td>35</td></tr> <tr><td>F</td><td>7</td><td>12</td><td>17</td><td>22</td><td>27</td></tr> <tr><td>L</td><td>15</td><td>20</td><td>25</td><td>30</td><td>35</td></tr> </table>		15	20	25	30	35	F	7	12	17	22	27	L	15	20	25	30	35	A:8m/m(standard) <table border="1"> <tr><td>13</td><td>15</td><td>18</td><td>21</td><td>29</td><td>38</td></tr> <tr><td>F</td><td>5</td><td>7</td><td>10</td><td>13</td><td>21</td><td>30</td></tr> <tr><td>L</td><td>13</td><td>15</td><td>18</td><td>21</td><td>29</td><td>38</td></tr> </table>		13	15	18	21	29	38	F	5	7	10	13	21	30	L	13	15	18	21	29	38	A:8m/m(standard) <table border="1"> <tr><td>13</td><td>18</td><td>21</td><td>29</td><td>38</td></tr> <tr><td>L</td><td>13</td><td>18</td><td>21</td><td>29</td><td>38</td></tr> </table>	13	18	21	29	38	L	13	18	21	29	38
15	20	25	30	35																																																		
F	7	12	17	22	27																																																	
L	15	20	25	30	35																																																	
13	15	18	21	29	38																																																	
F	5	7	10	13	21	30																																																
L	13	15	18	21	29	38																																																
13	18	21	29	38																																																		
L	13	18	21	29	38																																																	
NOTE: All type of shaft " L " dimension,consult customer service for available lengths																																																						

Switch