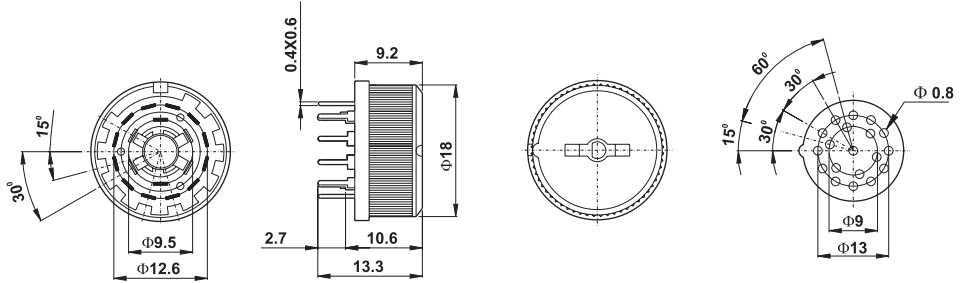
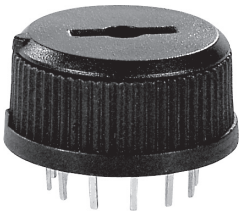


**Model** **Specifications**

SR1801V0

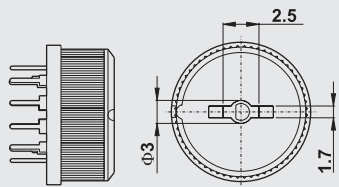


Timing: Non-Shorting(break before make)

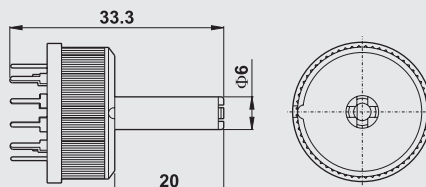
MOUNTING HOLE DETAIL  
CHANGEOVER ANGLE=30°

**ACTUATOR**

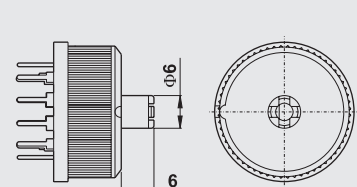
**D (STD.) SCREWDRIVER SLOT**



**20R PLASTIC SHAFT, <20mm**

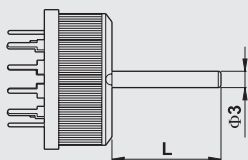


**6R PLASTIC SHAFT, 6mm**

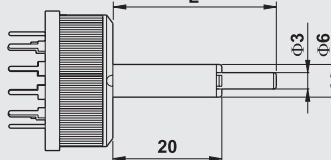


**AVAILABLE HARDWARE**

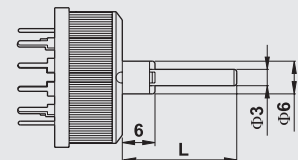
**W SHAFT**



**Y SHAFT**



**Q SHAFT**



**SW.FUNCTION**

- SP 2 POS.
- SP 3 POS.
- SP 4 POS.
- SP 5 POS.
- SP 6 POS.
- SP 7 POS.
- SP 8 POS.
- SP 9 POS.
- SP 10 POS.
- SP 11 POS.
- SP 12 POS.

**SW.FUNCTION**

- DP 2 POS.
- DP 3 POS.
- DP 4 POS.
- DP 5 POS.
- DP 6 POS.
- 3P 2 POS.
- 3P 3 POS.
- 3P 4 POS.
- 4P 2 POS.
- 4P 3 POS.
- 6P 2 POS.

NO.	L
1	10
2	15
3	20
4	25
5	50
6	70

NOTE: R3 metallic shaft,consult customer service for available lengths.

**SPECIFICATION**

CONTACT RATING: 0.3~3 AMPS  
 OPERATING TORQUE: 2.5 NCM 25% (1POLE).  
 STOP STRENGTH:>40 NCM  
 CONTACT RESISTANCE: 25MΩ  
 INSULATION RESISTANCE: >5 X 10<sup>9</sup>Ω  
 DIELECTRIC STRENGTH: 1000 V  
 ELECTRICAL LIFE: 15,000 OPERATIONS NO LOAD.

CONTACT AND TERMINAL MATERIAL	RATINGS	
	SILVER	LOW LEVEL/DRY CIRCUIT
GOLD	LOW LEVEL/DRY CIRCUIT OR POWER	SWITCH:20mA. POWER:0.5VA maximum. CARRY:3 AMPS.